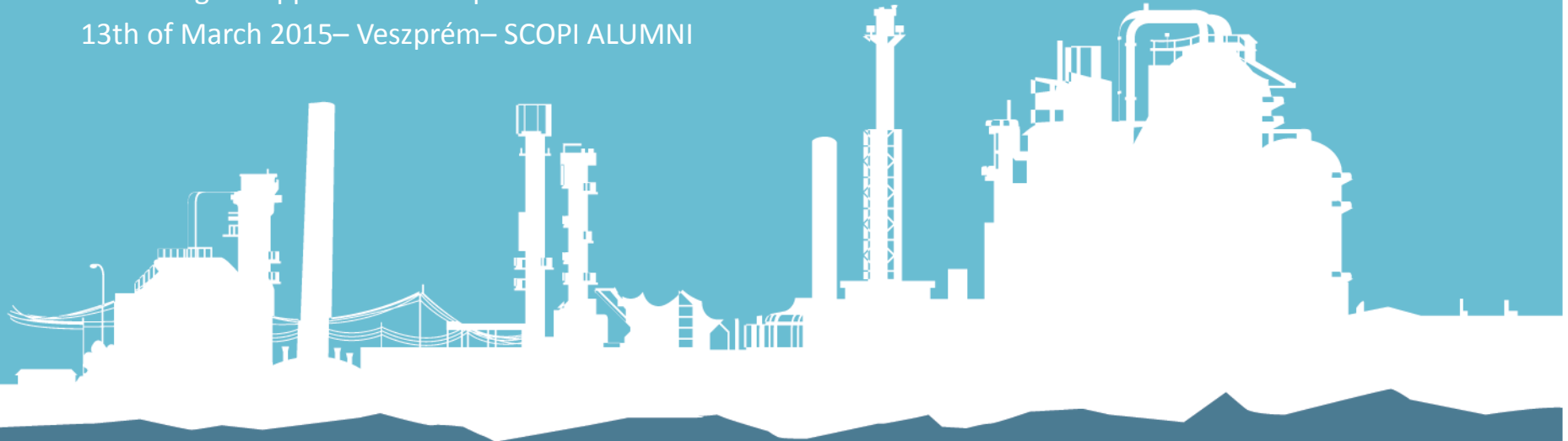

STATE OF THE ART REPORTING

Reinvent reporting (again)

Tamás Kenesei

Modelling & Support Senior Expert

13th of March 2015– Veszprém– SCOPI ALUMNI



Introduction



- ▶ Ms.C. IT 2006
- ▶ SCOPI 2008
- ▶ Ph.D 2014
- ▶ Logistic scheduling expert
- ▶ OPTRE
- ▶ Modelling&Support

Reporting?!!

Nightmare on Elm street



- ▶ Change in source system
- ▶ Change in user expectations
- ▶ Uncertain specification
- ▶ AspenTech vision - (if any)



- ▶ Aggregation
- ▶ Accessibility
- ▶ Comparability
- ▶ Transparency

XPIMS Reporting

MOL Group XPIMS Reporting evolution



- ▶ VBA-based
- ▶ Massive maintenance need
- ▶ Base for decision making

- ▶ XLS based
- ▶ Spread only among PIMS runners
- ▶ Base for fast result/constraints/d riving forces understanding

Maslow's hierarchy of needs

FOR REPORTING...



▶ Visualization

Tableau
Power BI

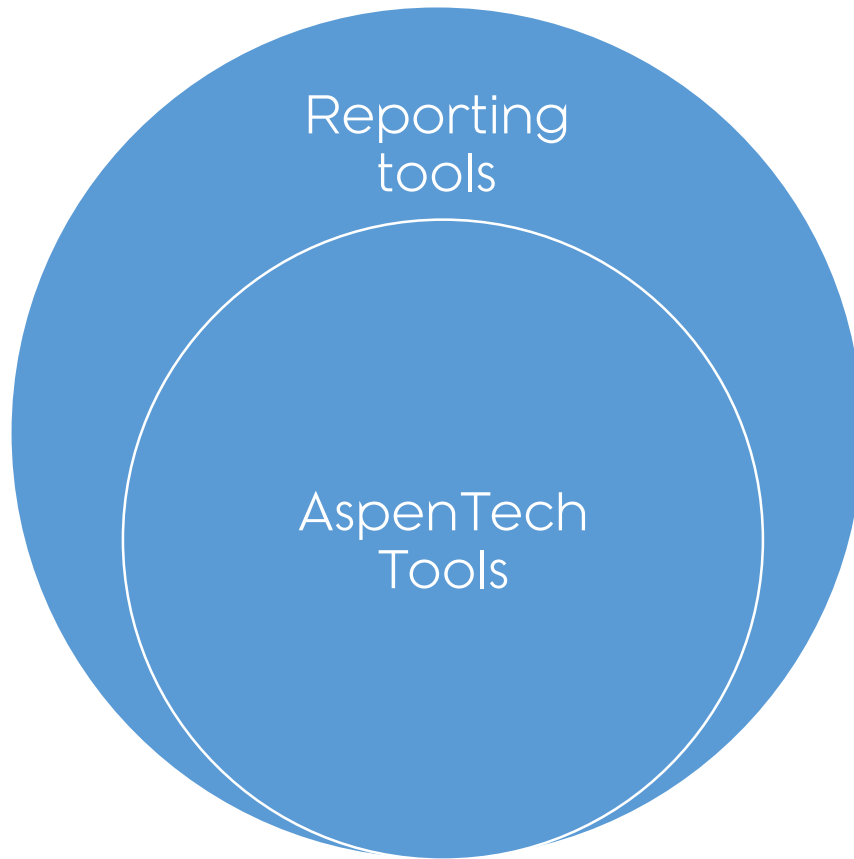
▶ Data Model

OLAP
DB/DWH
MDM

▶ Data Sources

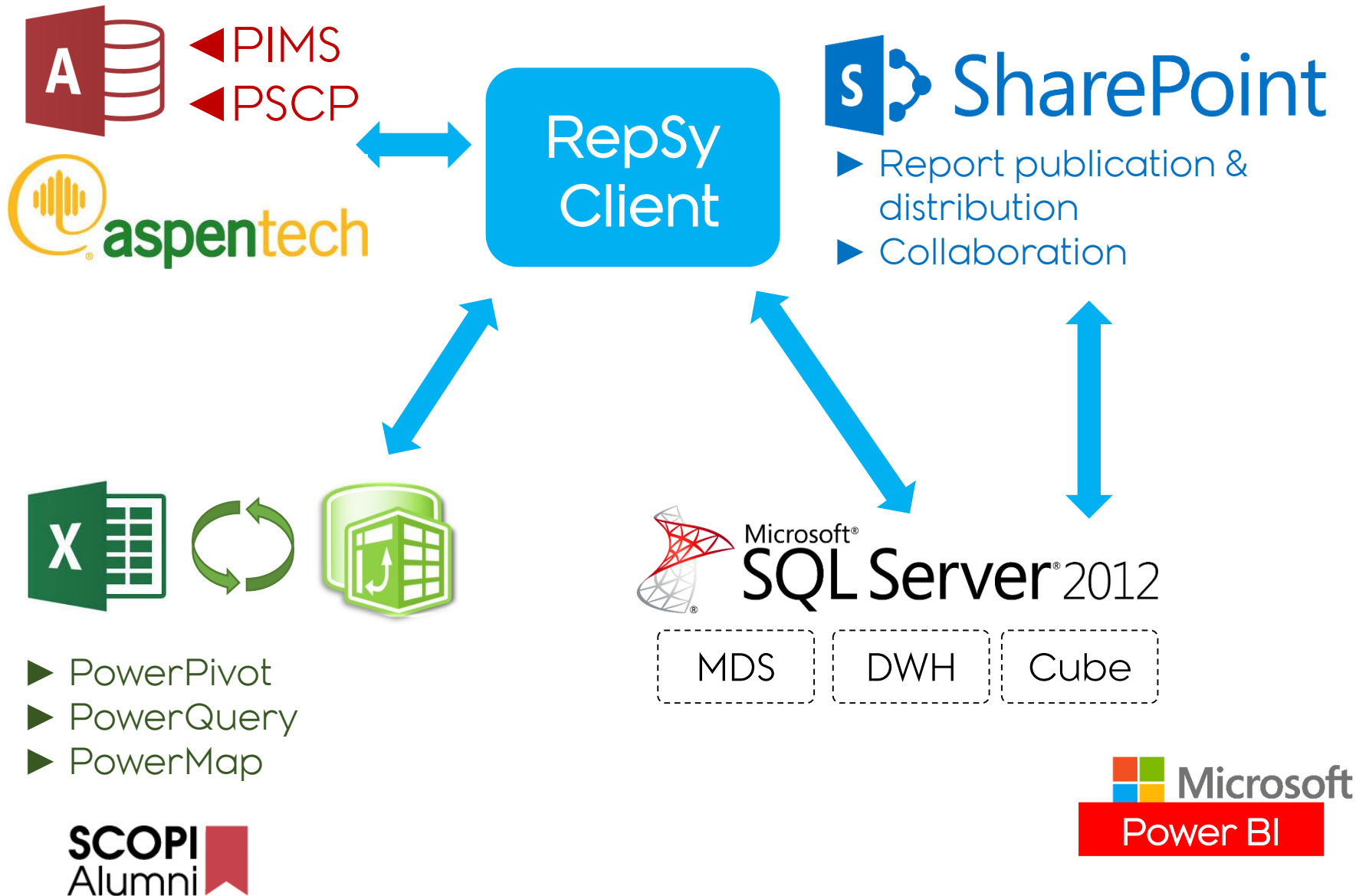
PIMS/PSCP/Orion
External data

RepSy concept



- ▶ AspenTech software is utilized to solve planning tasks
- ▶ Embed these technologies with state of the art technologies
- ▶ **Platinum, anyone?**

RepSy concept



Collaboration

The screenshot displays the RepSy Central Site web application. At the top, the browser address bar shows 'http://repsy.mol.hu'. The page header includes 'HOME' and a user greeting 'Welcome Jane Smith | My Site | My Links'. A navigation menu contains 'Home', 'Support', 'Admin', 'Documents', and 'SCM Team'. The main content area is divided into several sections:

- Welcome to RepSy Portal...:** A large banner with a bar chart icon and placeholder text: 'Quisque elit urna, aliquam sed, dignissim at, pellentesque sed, ante. Curabitur sit amet turpis. Fusce sem. Fusce ultricies, quam ac pharetra interdum, arcu tellus sollicitudin velit, in volutpat turpis nisi quis enim.'
- Links:** A list of links including 'RepSy Home', 'RepSy Blog', and 'RepSy Wish List', with an '+ Add new link' button.
- News:** A list of news items, including 'RepSy Christmas Party Coming Soon' and '12/01/2015: New RepSy Client (v12) released', with an '+ Add Item' button.
- Announcements:** A list of announcements, including 'An Announcement Title' and 'Another Announcement Title', with an '+ Add Announcement' button.
- Calendar:** A calendar view showing events for 12/10/2008, 12/18/2008, and 12/25/2008, with an '+ Add Event' button.
- At Blog Rollup Web Part:** A section containing three blog entries with user avatars and titles: 'The Admin's Opinion', 'The Guest Opinion', and 'October 2010 Sightings: Cornell Dupree'.

One More thing – Working Patterns

(Thank you Steve)

During our work, we leave data behind like footprints

A  Perl script recursively crawling through our servers collected info about



Servers

- ▶ PIMS runner
- ▶ Computer name



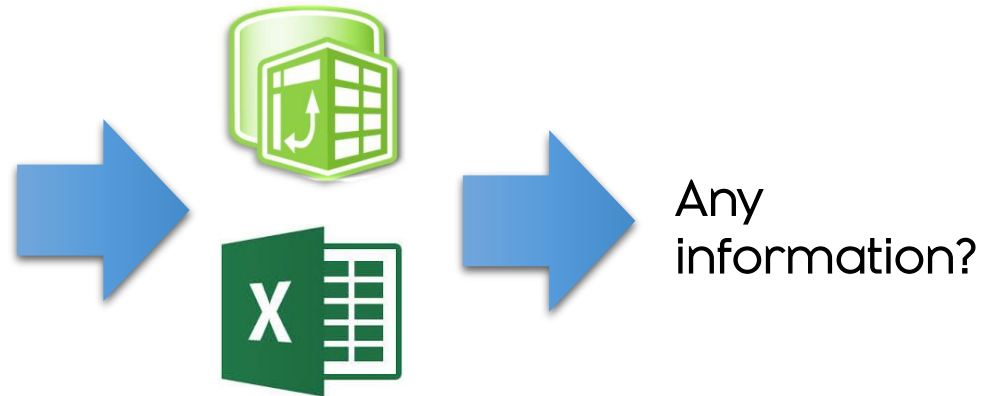
Results

- ▶ MDB & solution file
- ▶ Run time
- ▶ Distr. out of tolerance



Execution logs

- ▶ PIMS run length
- ▶ No. of passes
- ▶ Props. out of tolerance



Working Patterns

We have **archived** data for 4 teams (not historized)



Batta Hawks



Global Yankees



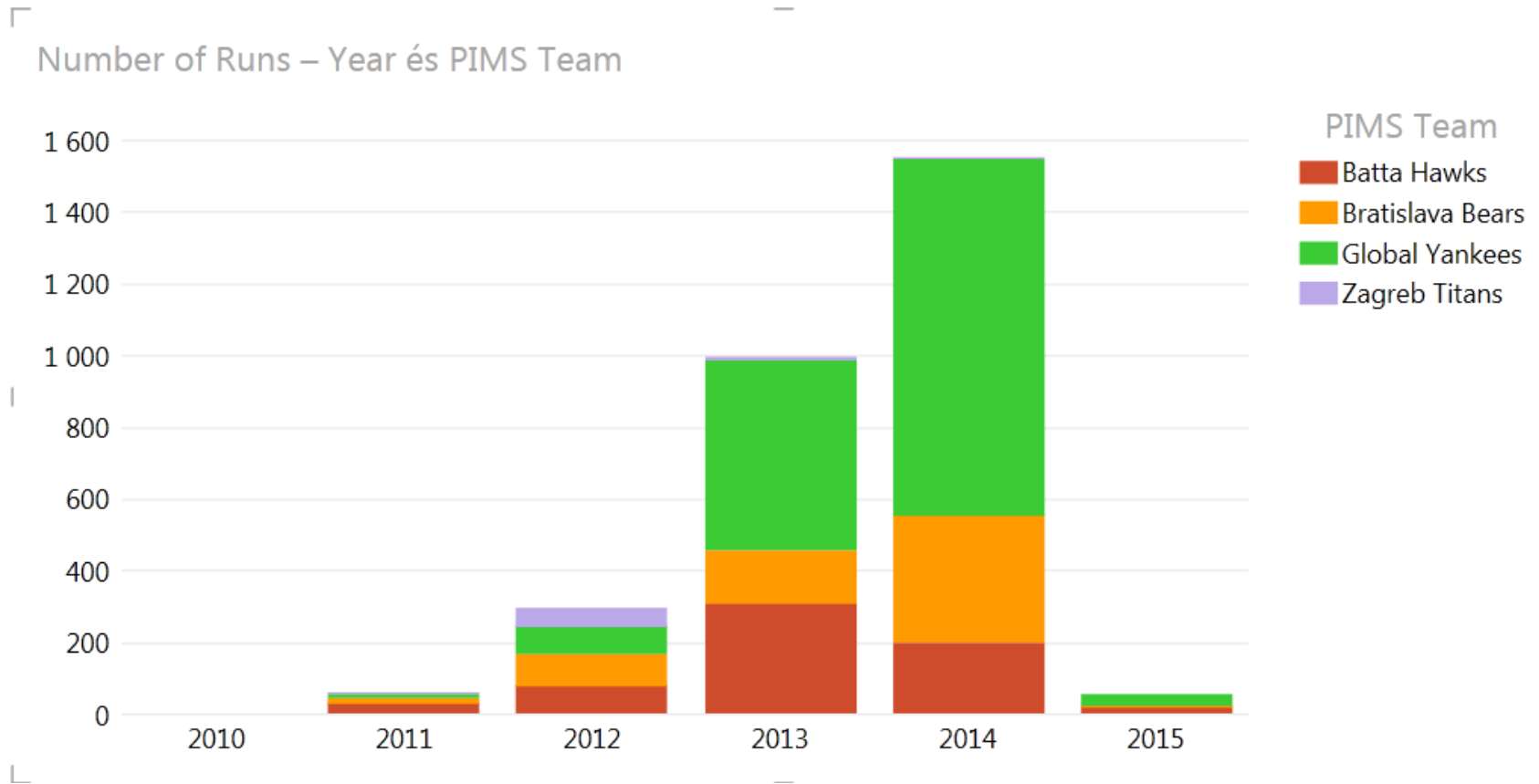
Bratislava Bears



Zagreb Titans

Our archive data

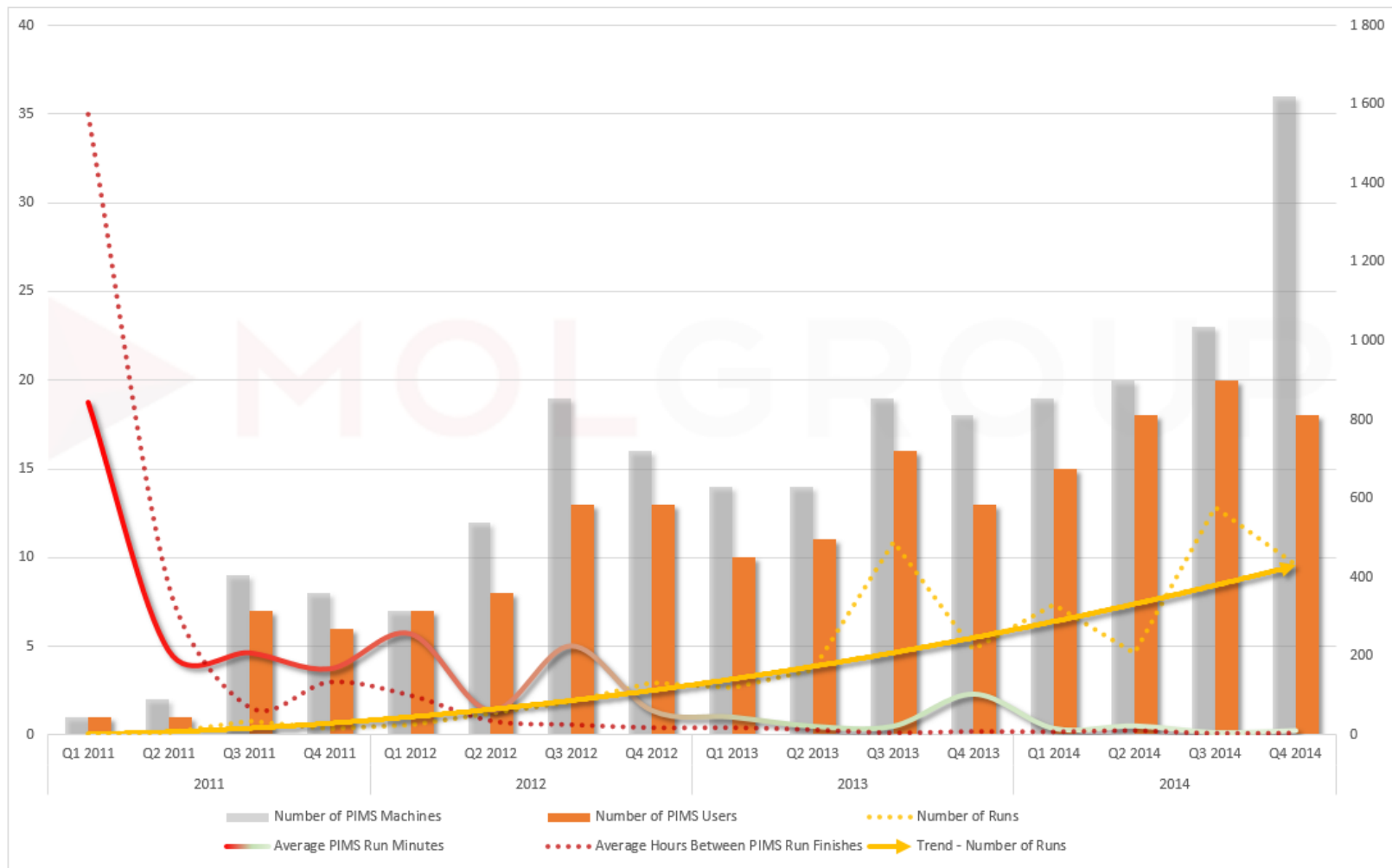
We have **archived** data for 4 teams (not historized)



- Year
- 2010
 - 2011
 - 2012
 - 2013
 - 2014
 - 2015
 - 2009

PIMS Team

- Batta Hawks
- Bratislava Bears
- Global Yankees
- Zagreb Titans



Year



PIMS Team



2010

Batta Hawks

Bratislava Bears

Global Yankees

Zagreb Titans

2011

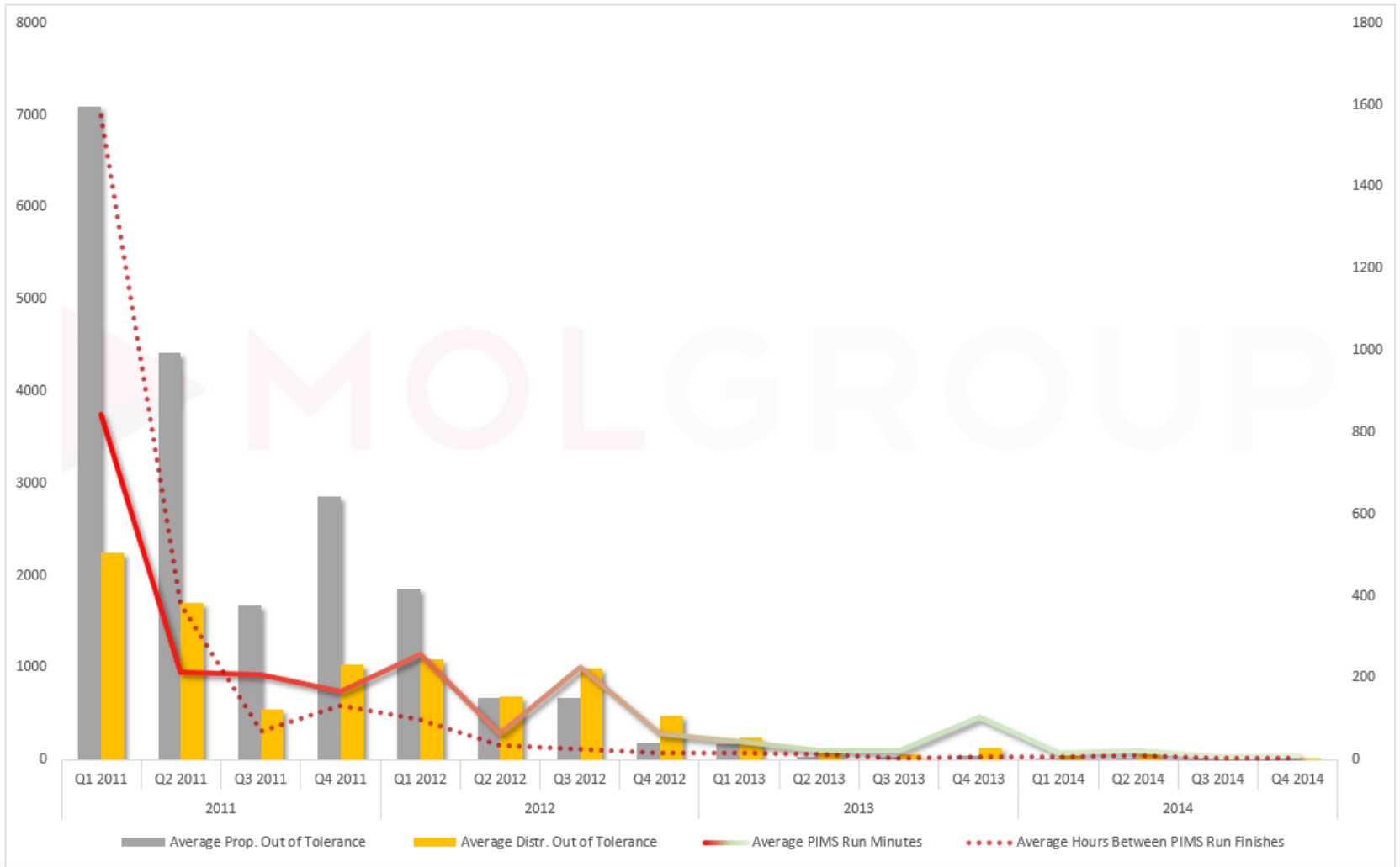
2012

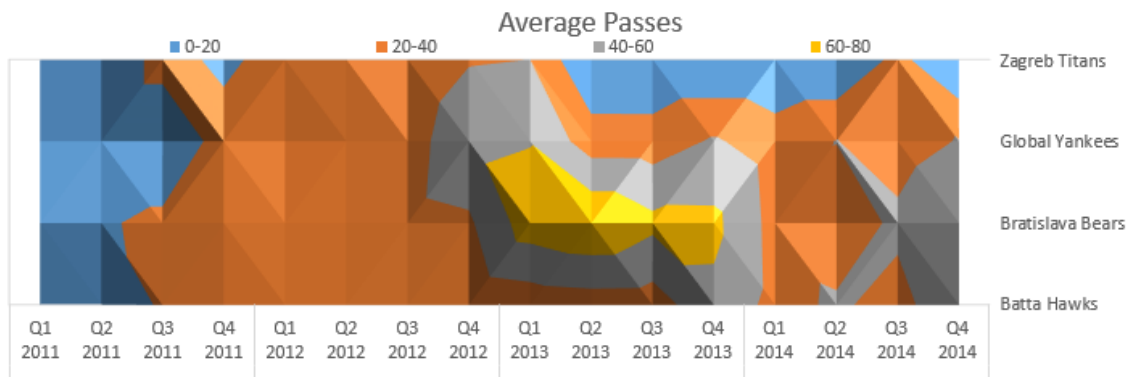
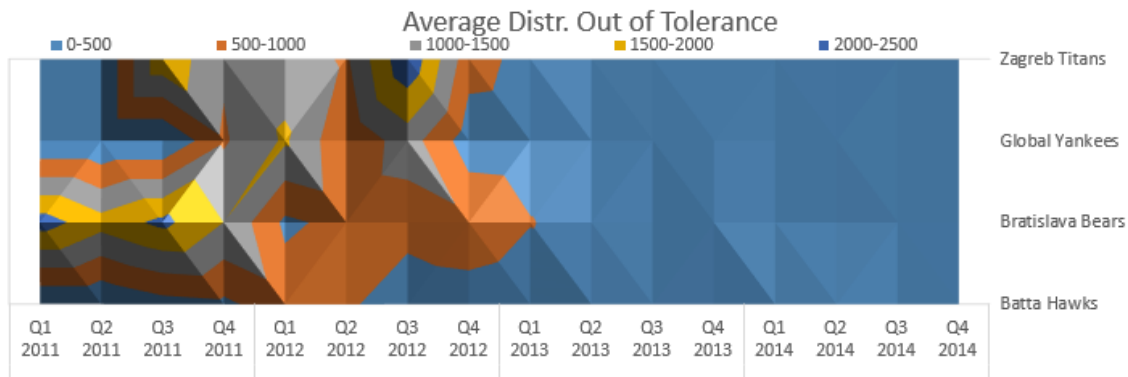
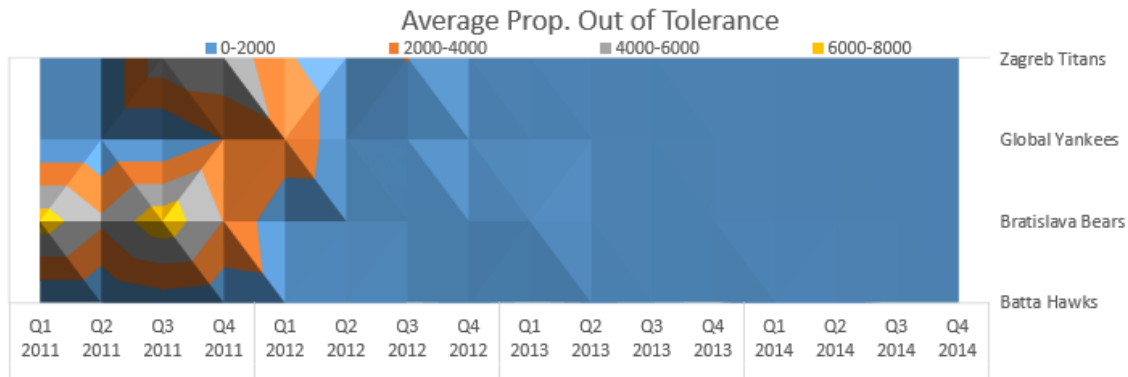
2013

2014

2015

2009





DEMO

Something else?



THANK YOU FOR YOUR ATTENTION

MORE INFO

takenesei@mol.hu

Tamás Kenesei

State of the art reporting

